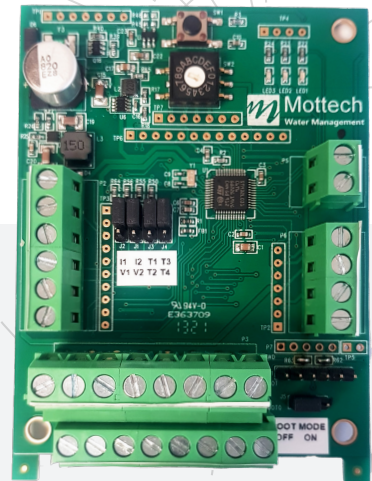


Mottech Smart Card-V2

Connect and monitor an extended range of sensor types with the new version of Mottech Smart Card-V2

The new version of the Mottech Smart Card (MSC-V2) provides a number of options in one card: Two A to D converters, Pulse Splitter, Pulse Divider and SDI-12 protocol. The MSC-V2 easily integrates into Motorola IRRInet controllers, or can be supplied as an autonomous unit.



The MSC-V2 offers

Exceptionally low energy consumption

Thanks to the card's energy-saving capability, the MSC-V2 works on the same power source as the Piccolo XR (6V battery and 60mA solar panel), IRRInet M, and other Motorola controllers. No need for an additional battery, solar panel or charger.

Wide range of input voltages

MSC-V2 works with a wide range of input voltages, from 5.5VDC to 14.5VDC

Operation Modes for Managing Energy Consumption

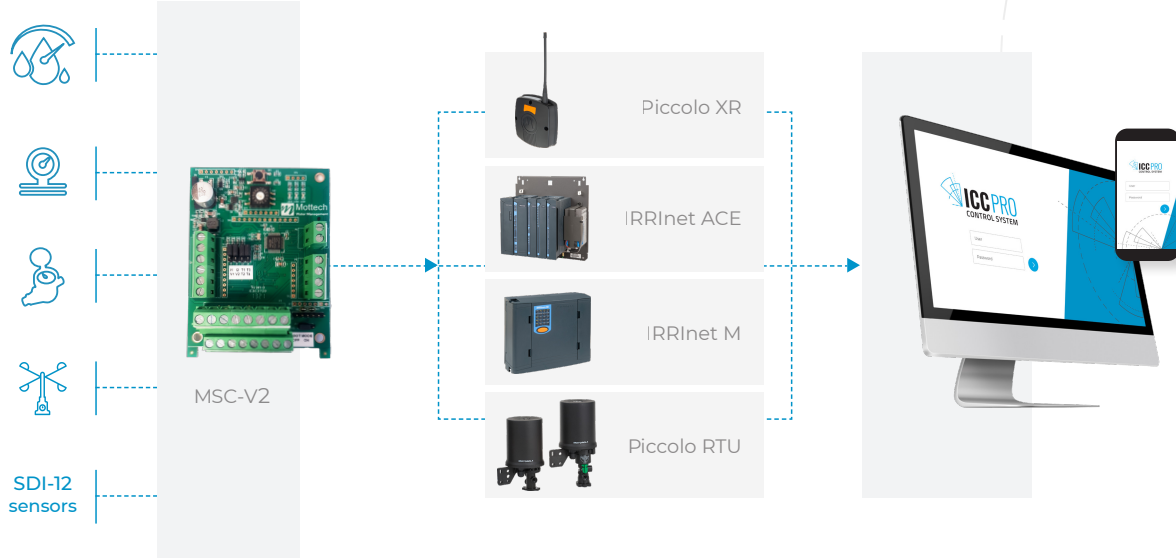
- **ALWAYS OPEN*** - Continuous sampling, with constant energy consumption
- **OPEN 1-MINUTE** - Sampling every 1 minute, for an energy-saving mode
- **OPEN 5-MINUTES** - Sampling every 5 minutes, for a super energy efficient mode

* Sampling every 30 seconds

Key Features

- 2 analog inputs on one card
- SDI-12 protocol capability
- Provides 16VDC output to operate the sensor
- Provides protection against overvoltage and reverse polarity
- Led indications
- 10-options switch





Technical Specifications

- **Power IN:** 5.5 – 14.5 VDC, compatible with the IRRInet & XR power source
- **Power OUT Sensor:** 16 VDC
- **Sensor IN:** 2 AI voltage or current
Current: 4-20 mA
Voltage: 0-10 volt
For sensors with no power supply – the MSC-V2 will supply the power to the sensor.
- **Pulse IN:** Dry contact, pulse width ≥ 20 ms, pulse frequency 0–20,000p/h
- **Pulse OUT:** 12 pulse out.
- **Board Dimension** – 9.3 X 7 cm

MSC-V2 – 10 Options Switch

1. **Always open high** – A to D converter. Sampling frequency: 30 seconds. Pulse rate: 400 – 3600p/h.
 2. **Always open low** – A to D converter. Sampling frequency: 30 seconds. Pulse rate: 40 – 360p/h.
 3. **Open 1 minute - high** – A to D converter. Sampling frequency: 1 minute. Pulse rate: 400 – 3600p/h.
 4. **Open 1 minute - low** – A to D converter. Sampling frequency: 1 minute. Pulse rate: 40–360p/h.
 5. **Open 5 minute - high** – A to D converter. Sampling frequency: 5 minutes. Pulse rate: 400 – 3600p/h.
 6. **Open 5 minute - Low** – A to D converter. Sampling frequency: 5 minutes. Pulse rate: 40– 360p/h.
 7. **Pulse splitter** – MSC-V2 provides the same frequency pulses for Out 1 & 2 in parallel.
 8. **Pulse divider** – MSC-V2 provides dry contact pulses by dividing the frequency by 10.
 9. **SDI-12 Protocol** – Up to 12 sensors can be connected. Sampling frequency: 1 minute.
 - A. **SDI-12 Protocol Power saving mode.** Up to 12 sensors can be connected. Sampling frequency: 10 minutes.
- **High option** are suitable for IRRInet ACE, M and Piccolo XR.
 - **Low option** are suitable for Piccolo RTU.